

# How to install MathMagic manually on Mac OS X.

(Based on MathMagic v5.42 or later)

MathMagic used to come with a industry standard installer for the Easy Installation and flexible Custom Installation options since its debut. However, there were more demands for simple intuitive installation process as more users migrated to Mac OS X. These days, Drag-and-Drop installation tends to be more common and preferred by many users. Thanks to Mac OS X's built-in dmg format.

We believe that this would help user have the full control over what goes where, especially under multi-user environment

- For the detailed step-by-step instructions, please read below.

---

## \* 3-Simple Steps:

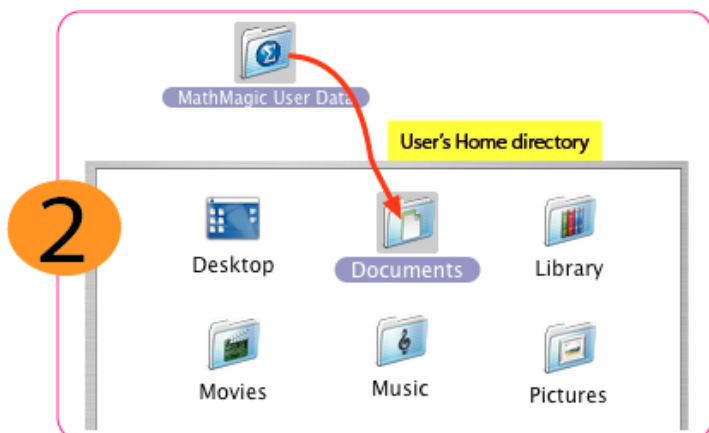
---

### 1. Install MathMagic Folder.



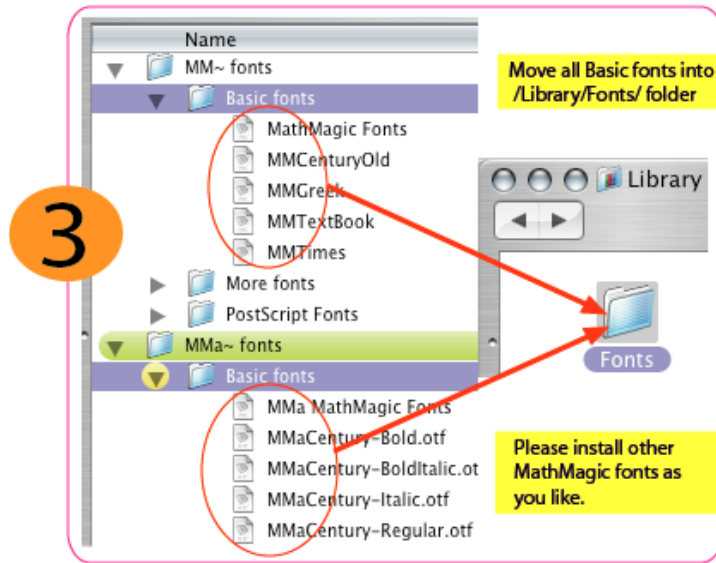
- Move "MathMagic Personal Edition" folder or "MathMagic Pro Edition" folder (depending on the product you download) to the **/Applications/** folder or anywhere else in your hard disk at your convenience.
- This folder contains the latest version of MathMagic application, ReadMe and some other documents, and samples. Pro Editions have InDesign Plug-ins or QuarkXPress XTensions as well. If you have a previously installed one in your Applications folder already, you may replace the whole folder, or just copy the latest MathMagic application only into the previous Math folder if you want to keep the old versions concurrently for some back-up or compatibility issue.

### 2. Install "MathMagic User Data". (Recommended for 1st time users. Optional for updating users.)



- Move "MathMagic User Data" folder into the **/Users/user home/Documents/** folder in your startup hard disk.
- This folder contains StyleSet list, Equation Clips, and User defined Color list. If you had this folder already in place from your previous installation or running MathMagic, you may skip this process. Or, you may selectively install some of the StyleS list or Equation Clips from the new "MathMagic User Data" if it comes with new predefined settings.

### 3. Install MathMagic fonts.(Required for 1st time users only)



- Open "MathMagic Fonts" folder. Copy all required fonts from /MM~ fonts/Basic fonts/ folder. And paste it into either /Library/Fonts/ folder or /user's home/Library/Fonts/ folder. Repeat this for /MMA~ fonts/Basic fonts/ folder.
- **MM Fonts** folder contains all 1st Generation MathMagic fonts which are in TrueType format. **MMA Fonts** folder contains all 2nd Generation MathMagic fonts, some Symbol fonts are TrueType and some are OpenType. We recommend to install all fonts in Basic fonts folder from both MM~ fonts and MMA~ fonts. If you have installed MathMagic fonts in the past, you don't need to install again.
- You may want to install some other MathMagic fonts from **More Fonts** folder for further styles.

---

#### \* Detailed Instructions:

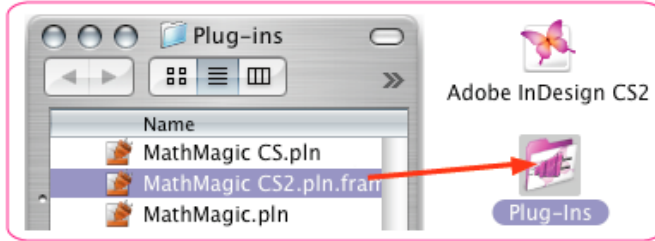
---

#### \* MathMagic Personal Edition

- move "MathMagic Personal Edition" folder into the Applications folder or anywhere at your convenience.
- install all of the following Basic fonts into your Fonts folder.
  - MathMagic Personal Edition/TrueType & OpenType Fonts/MM~ fonts/Basic fonts/ -> /Library/Fonts/
  - MathMagic Personal Edition/TrueType & OpenType Fonts/MMA~ fonts/Basic fonts/ -> /Library/Fonts/
- move "MathMagic User Data" folder into /user home/Documents/ folder.

#### \* MathMagic Pro Edition for Adobe InDesign™

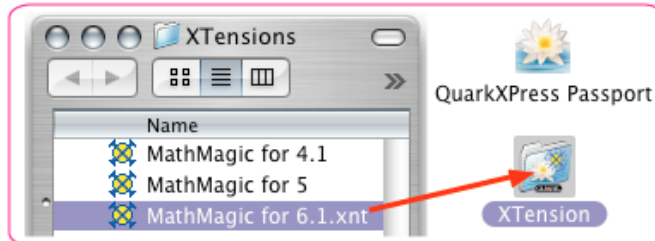
- move "MathMagic Pro Edition" folder into the Applications folder or anywhere in your hard disk at your convenience.
- install all of the following Basic fonts into your Fonts folder.
  - MathMagic Pro Edition/TrueType & OpenType Fonts/MM~ fonts/Basic fonts/ -> /Library/Fonts/
  - MathMagic Pro Edition/TrueType & OpenType Fonts/MMA~ fonts/Basic fonts/ -> /Library/Fonts/
- move "MathMagic User Data" folder into /Users/user home/Documents/ folder.
- copy the correct version of MathMagic plug-in into the Adobe InDesign's Plug-ins folder.



- Adobe InDesign CS2  
MathMagic Pro Edition/Plug-ins/MathMagic CS2.pln.framework -> /Applications/Adobe InDesign CS2/Plug-ins/
- Adobe InDesign CS  
MathMagic Pro Edition/Plug-ins/MathMagic CS.pln -> /Applications/Adobe InDesign CS/Plug-ins/
- Adobe InDesign 2.0x  
MathMagic Pro Edition/Plug-ins/MathMagic.pln -> /Applications/Adobe InDesign 2.0/Plug-ins/

## \* MathMagic Pro Edition for QuarkXPress™

- move "MathMagic Pro Edition" folder into the Applications folder or anywhere in your hard disk at your convenience.
- install all of the following Basic fonts into your Fonts folder.  
MathMagic Pro Edition/TrueType & OpenType Fonts/MM~ fonts/Basic fonts/ -> /Library/Fonts/  
MathMagic Pro Edition/TrueType & OpenType Fonts/MMA~ fonts/Basic fonts/ -> /Library/Fonts/
- move "MathMagic User Data" folder into /Users/user home/Documents/ folder.
- copy the correct version of MathMagic XTension into the QuarkXPress's XTension folder.



- QuarkXPress v7.x  
MathMagic Pro Edition/XTensions/MathMagic XT for 7.xnt -> /Applications/QuarkXPress 7/XTensions/
- QuarkXPress v6.x  
MathMagic Pro Edition/XTensions/MathMagic for 6.1.xnt -> /Applications/QuarkXPress 6/XTension/
- QuarkXPress v5.0  
MathMagic Pro Edition/XTensions/MathMagic for 5 -> /Applications/QuarkXPress 5.0/XTension/
- QuarkXPress v4.1  
MathMagic Pro Edition/XTensions/MathMagic for 4.1 -> /Applications/QuarkXPress 4.1/XTension/

---

### \* Customer Support:

---

- If an instruction for Mac OS 9 is needed, please contact us.
- Should you have any question or problem in installing or using MathMagic, please contact us.

MathMagic Customer Support  
support@mathmagic.com  
1-604-468-8509

© 1998-2006 InfoLogic, Inc. All rights reserved.  
[Math+Magic], MathMagic, MathMagic Pro Edition, MathMagic Personal Edition, MathMagic Prime Edition, MathMagic XTensions, MathMagic logo, InfoLogic logo and InfoLogic are trademarks or registered trademarks of InfoLogic, Inc.  
All other trademarks may be the properties of their respective owners.

www.mathmagic.com