

How to install MathMagic manually on Mac OS X.

(Based on MathMagic v8.0 or later)

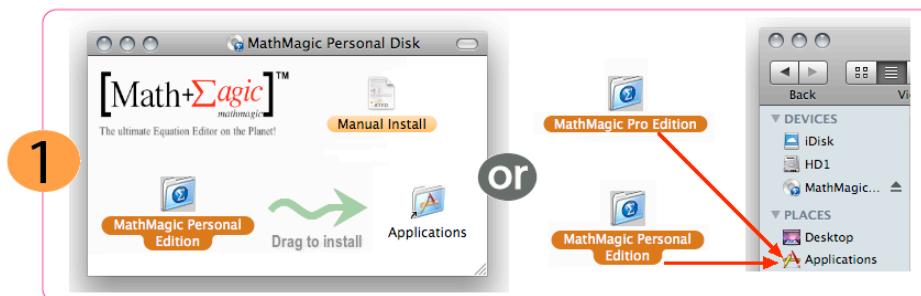
MathMagic is designed to work with Drag-and-Drop installation. MathMagic is distributed in .dmg format, Apple's standard Disk Image format. These days, Drag-and-Drop installation is preferred by many users as they could have more control over what goes where. Thanks to Mac OS X's built-in dmg format.

MathMagic application will also automatically install its fonts and some equation clips when it is first launched and if previously installed files are not found.

- For the detailed step-by-step instructions, please read below.

* 2-Simple Steps:

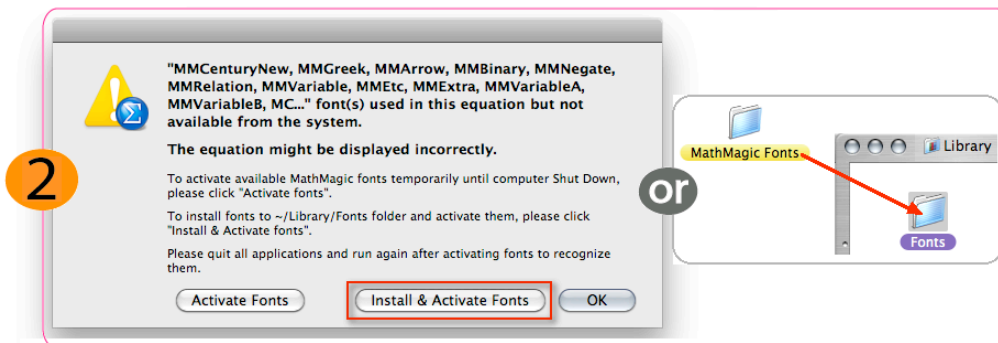
1. Copy MathMagic Folder to your /Applications/ folder.



• Move "MathMagic Personal Edition" folder or "MathMagic Pro Edition" folder (depending on the product you download) into the /Applications/ folder or anywhere in your hard disk. You may simply drag it over to the alias file of Applications folder, located inside the disk image for your convenience.

• This folder contains the latest version of MathMagic application, Fonts, ReadMeFirst and some other documents, and equation samples. Pro Editions have InDesign Plug-ins or QuarkXPress XTensions as well. If you have a previously installed copy in your Applications folder already, you may replace the whole folder, or just copy the latest MathMagic application only, into the previous MathMagic folder if you want to keep the old versions concurrently for some back-up or compatibility purpose.

2. Run MathMagic application or Install MathMagic fonts manually.



• Launch MathMagic Personal or MathMagic Pro application.

• It will install MathMagic Fonts automatically upon your confirmation if MathMagic fonts are not readily available from your System. This automatic installation or activation of fonts may not work in some cases especially when other applications are readily running or some of MathMagic fonts are already installed. In this case, please remove previously installed MathMagic fonts from ~(user home)/Library/Fonts/ folder, restart your computer, and then try again.

- For manual installation of MathMagic fonts,
 - First, Locate MathMagic Fonts folder by opening MathMagic application package. Right-button click on MathMagic application icon, then select "Show Package Contents" command to see the MathMagic Fonts folder ("MathMagic Personal Fonts" or "MathMagic Pro Fonts").
 - Then, select and copy(cmd-C) the "MathMagic ~ Fonts" folder.
 - Go to the following folder (you may need to hold **option** key while selecting "Go" menu from Finder to access "Library" folder).
 - ~(user home)/Library/Fonts/
 - or
 - /Library/Fonts/
 - Paste(cmd-V) it to install the whole "MathMagic ~ Fonts" folder.

• It is recommended to restart your computer after installing new fonts so those new fonts are available to all other applications, PDF engine and printer drivers.

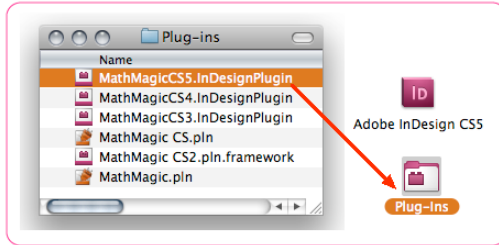
* Detailed Instructions:

* MathMagic Personal Edition

- move "MathMagic Personal Edition" folder into the Applications folder or anywhere at your convenience.
- install all of the MathMagic Fonts into your Fonts folder manually by the following steps:
 - Right-button click on MathMagic Personal application icon. Select "Show Package Contents" menu command to see "MathMagic Personal Fonts" folder.
 - Click and Select "MathMagic Personal Fonts" folder. Select Copy command(cmd-C) to copy the folder.
 - Go to the following Fonts folder. (you may need to hold option key while selecting "Go" menu from Finder to access "Library" folder.)
~(user home)/Library/Fonts/
 - Paste (cmd-V) to insert "MathMagic Personal Fonts".
 - Restart your computer to make sure new fonts are loaded correctly and available to all other applications, printer drivers and PDF engine.

* MathMagic Pro Edition for Adobe InDesign™

- move "MathMagic Pro Edition" folder into the Applications folder or anywhere in your hard disk at your convenience.
- install all of the MathMagic Fonts into your Fonts folder manually by the following steps:
 - Right-button click on MathMagic Pro application icon. Select "Show Package Contents" menu command to see "MathMagic Pro Fonts" folder.
 - Click and Select "MathMagic Pro Fonts" folder. Select Copy command(cmd-C) to copy the folder.
 - Go to the following Fonts folder. (you may need to hold option key while selecting "Go" menu from Finder to access "Library" folder.)
~(user home)/Library/Fonts/
 - Paste (cmd-V) to insert "MathMagic Personal Fonts".
 - Restart your computer to make sure new fonts are loaded correctly and available to all other applications, printer drivers and PDF engine.
- copy the correct version of MathMagic plug-in into the Adobe InDesign's Plug-ins folder, depending on your InDesign version.



- Adobe InDesign CC
MathMagic Pro Edition/Plug-ins/MathMagic CC.InDesignPlugin -> /Applications/Adobe InDesign CC/Plug-ins/
- Adobe InDesign CS6
MathMagic Pro Edition/Plug-ins/MathMagic CS6.InDesignPlugin -> /Applications/Adobe InDesign CS6/Plug-ins/
- Adobe InDesign CS5.5
MathMagic Pro Edition/Plug-ins/MathMagic CS5.5.InDesignPlugin -> /Applications/Adobe InDesign CS5.5/Plug-ins/
- Adobe InDesign CS5
MathMagic Pro Edition/Plug-ins/MathMagicCS5.InDesignPlugin -> /Applications/Adobe InDesign CS5/Plug-ins/
- Adobe InDesign CS4
MathMagic Pro Edition/Plug-ins/MathMagicCS4.InDesignPlugin -> /Applications/Adobe InDesign CS4/Plug-ins/
- Adobe InDesign CS3
MathMagic Pro Edition/Plug-ins/MathMagicCS3.InDesignPlugin -> /Applications/Adobe InDesign CS3/Plug-ins/
- Adobe InDesign CS2
MathMagic Pro Edition/Plug-ins/MathMagic CS2.pln.framework -> /Applications/Adobe InDesign CS2/Plug-ins/

* Customer Support:

- Should you have any question or problem in installing or using MathMagic, please contact us.

MathMagic Customer Support
support@mathmagic.com
1-778-654-3377

© 1998-2015 InfoLogic, Inc. All rights reserved.
[Math+Magic], MathMagic, MathMagic Pro Edition, MathMagic Personal Edition, MathMagic Prime Edition, MathMagic Lite Edition, MathMagic logo, InfoLogic logo and InfoLogic are trademarks or registered trademarks of InfoLogic, Inc. All other trademarks may be the properties of their respective owners.

www.mathmagic.com