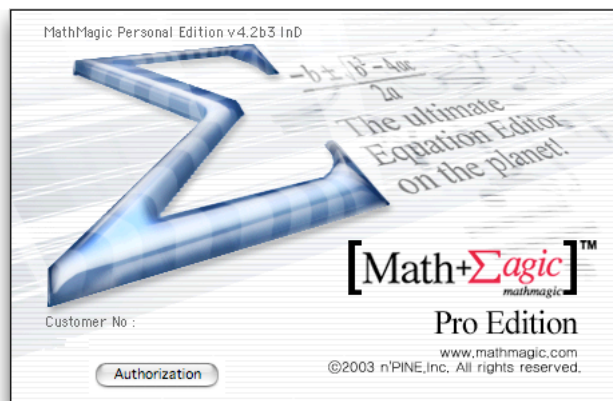




The ultimate Equation Editor on the planet!

**MathMagic Pro Edition
&
MathMagic Personal Edition
Installation Guide**



For Macintosh

v4.2

US English

rev. 7

January 2004

www.mathmagic.com

1. Using Installer

Please use the MathMagic Installer for easy and proper installation of all necessary components in the right locations.

The installer can be found on the MathMagic CD if you bought a physical package, or you can get it by downloading from MathMagic.com web site. If you download the installer, you may need to decompress it with Stuffit Expander utility if it is not automatically decompressed.



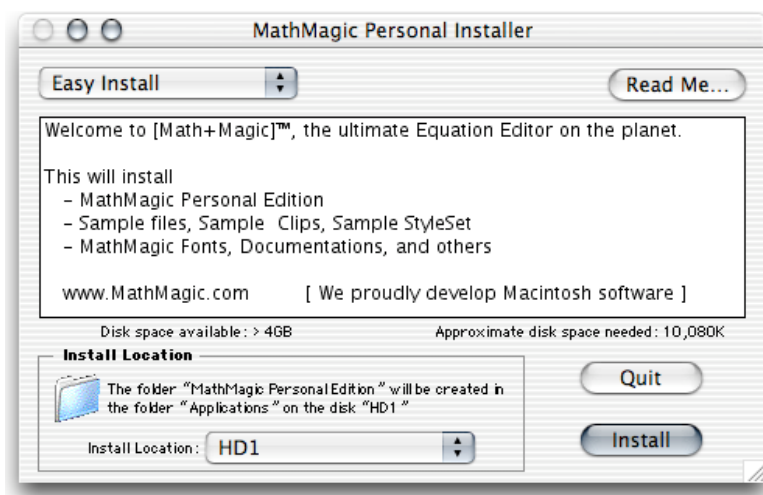
MathMagic PE Installer



MathMagic Pro Installer

Please launch the installer.

After you accept Software License Agreement, and read the ReadMe contents displayed by the installer, the following "Easy Install" window will be displayed.

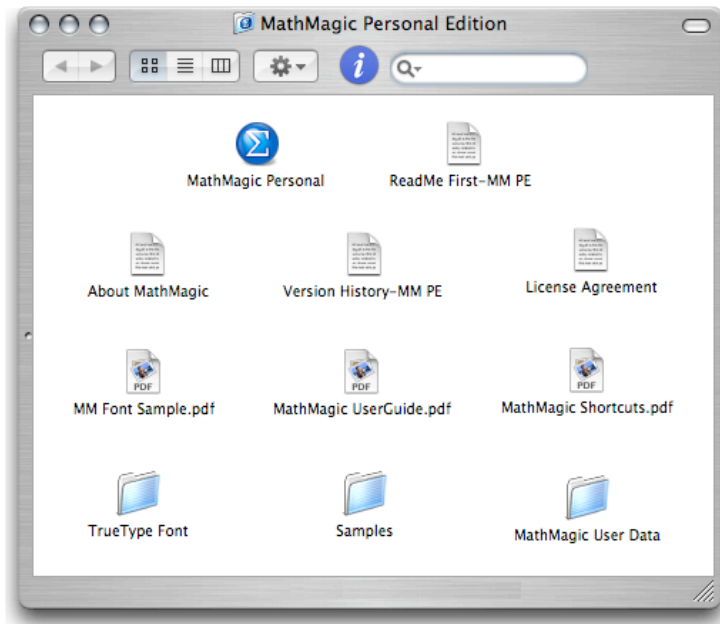


Click "Install" button to begin installation. The installer will place all necessary files in their respective locations.

If you are using Mac OS 9 or earlier, since new fonts and some system level extension are installed into the current System, it is recommended to restart your Mac after installation. You may change the Install Location by switching disk to another, or selecting another folder.

When you are installing MathMagic on Mac OS X with Classic(Mac OS 9) on top of it, please make sure that you install MathMagic fonts in the OS 9's System folder as well so that those Classic application can also display equation PICT correctly with correct fonts.

After the installation, the "MathMagic Personal Edition" folder or "MathMagic Personal Edition" folder will be opened automatically for you.

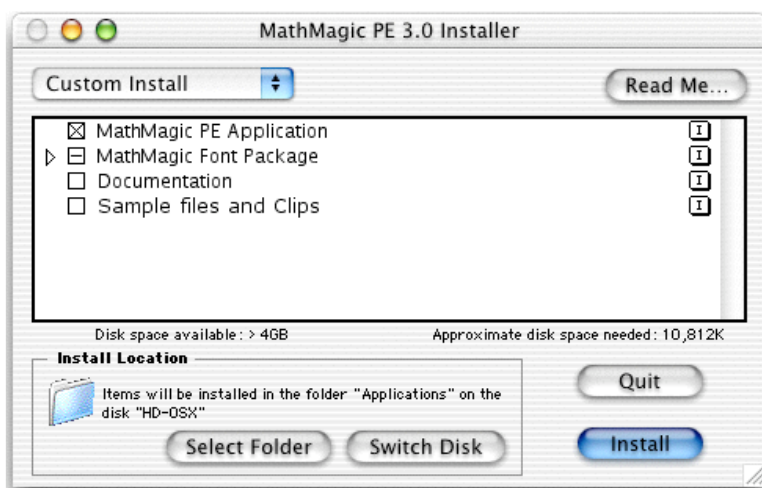


Please note that the **MathMagic Personal Edition** folder will be installed in the **Applications** folder of the OS X, or in the **Applications(OS 9)** directory in the startup volume on OS 9 or earlier.

In the **MathMagic Install Log** file, You can find all the detail file list and installed locations in the system during the installation.

2. Custom Installation

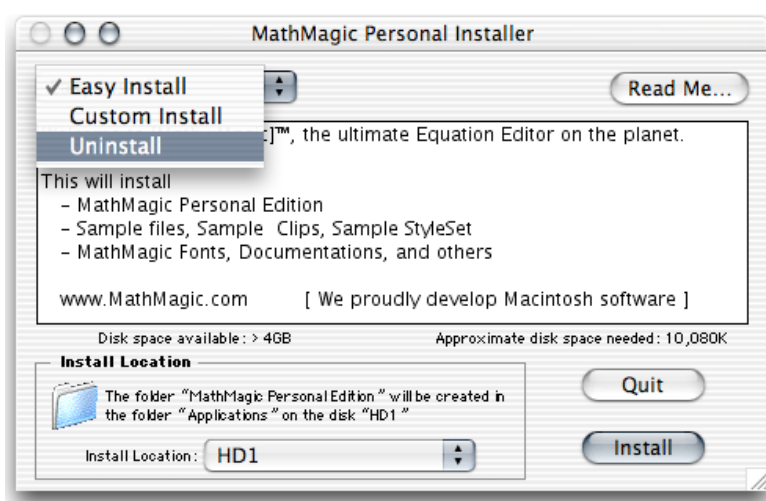
If you need to reinstall MathMagic components after your first installation, you may just want to install some necessary files only. Please run the installer again and choose "Custom Install" to select the items. Then, clicking on the "Install" button will start installation and place the selected files into their correct locations.



- MathMagic Application : will install MathMagic Application, a standalone application for general users including students, teachers, as well as pro users.
- MathMagic Font Package : will install MathMagic TrueType fonts.
- Documentation : will install documents about MathMagic including the PDF User Guide.
- Sample files and Clips : will install sample files and equation clips created by MathMagic.

3. Uninstalling

MathMagic Installer can also be used to uninstall MathMagic components that were installed with the installer.



Please click on the "Easy Install" pop-up button and choose "Uninstall" menu. Then click "Uninstall" button on the right bottom.

4. Finding the latest version

The latest version of MathMagic is available from the MathMagic web site. For the details of downloading, please refer to the web site.

<http://www.mathmagic.com/download/>

If you bought a physical package, you may also want to check the download page before you install from the CD so that you make sure you install the latest version.

If you want to buy the latest **MathMagic Personal Edition** or **MathMagic Pro Edition** from the MathMagic online store, please visit

<http://www.mathmagic.com/store/>

You can also find a **Local Reseller** information near you on the web site if you want to buy a physical package near you.

<http://www.mathmagic.com/support/>

Once you complete user registration from the MathMagic web site, you'll later be informed when a new version is available.

5. User Registration

If you bought a MathMagic product online, you will receive a **Customer Number via e-mail**.

Or, if you bought a physical package from a store or local reseller, you can find a **Product Number** on the CD jewel case or on the back side of the End User License Agreement card in the package .

Customer Number(Product Number) looks like this.

XXXXXX-XXX-XXXXXX

After you receive or find your Customer Number or Product Number, you are kindly requested to register your copy on the web site with your web browser at

www.mathmagic.com/register/

Or, if prefer to sending it via email, please send the following Registration information to

support@mathmagic.com

Once you register successfully, you will be offered the **authorization** information for your copy, normally within 1 business day via email.

Before you register, please prepare the following information.

- User Name:
- Organization/Company:
- Email Address:
- Phone:
- Country:
- Product Name:
- Product Number(Customer Number):
- Date of Purchase:

Please make sure that your e-mail address is correct and always available.

In case you do not have a web browser for the online registration, you may e-mail us your registration information listed above so that our customer support team can handle it for you.

support@mathmagic.com

6. Authorizing your copy with a Serial code

You may run MathMagic without authorization serial code for a while as a fully functional Trial demo mode.

To authorize your copy of MathMagic Personal or Pro on your specific Macintosh machine and make it run without displaying the Trial Nagging message, however, it is required to enter a valid **Customer number(or Product #)** and **Serial number** string in the **Authorization** dialog.

Registered user thru the web or email should receive both a unique **Customer number and Serial number** string via e-mail for the activation of his/her own copy along with the latest news and services offered by MathMagic.com. Normally the Serial code will be delivered within 1 business days. But the different National holidays and different time zone may cause a delay of a few more days. If you did not hear from MathMagic support team for more than 2 days, please contact us again via email.

Customer number(or Product #) looks like this.

XXXXXX-XXX-XXXXXXX

Serial number looks like this.

XXXX-XXXX-XXXX

Older versions may have different format than above.

After you enter both a customer number and a serial code correctly, press "Authorize" button and it will confirm your code.

Until the demo trial period expires, you may use the software with fully functional Trial mode by pressing "Try" button from the Authorization window. This will reduce your trial count.

If you press "Quit", it will just quit without reducing the trial count.

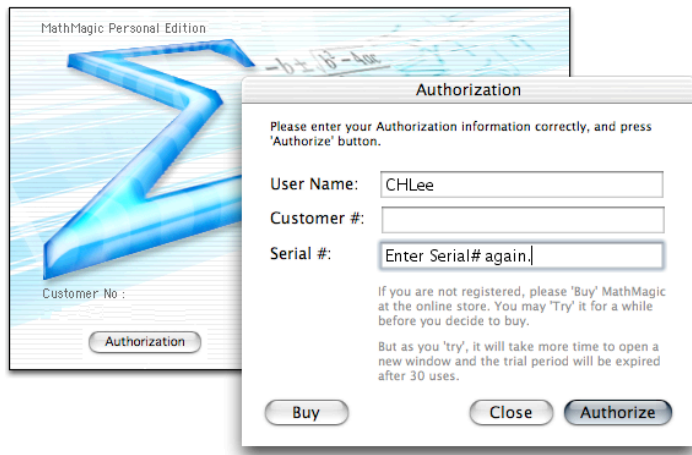
You may visit MathMagic Online store by pressing "Buy" button thru your preferred web browser.

Please note that your Serial Number may encodes the expiration date of your copy depending on your subscription period. If you bought a full version, not a subscription version, you may use your copy even after the expiration date. But free upgrade is no longer available after the expiration.

Please visit MathMagic web site for the latest licensing policy since it might be changed to better serve our customers and to meet the trends.

Once you authorize your copy, the application will run without displaying the Authorization nagging dialog.

For some reasons, when you need to open the Authorization window again, please open the "**About MathMagic...**" splash window from Apple(or Application) menu. There you will find a button to open the authorization window.



Here, you can enter a new User name, Customer number or Serial number to change the ownership or to extend the subscription period.

On this dialog window, the Customer # and Serial # you already have are not fully displayed. This is intentional to protect your licensing information. Please be careful about your Customer # and Serial #.

Please note that if your authorization info is used by others or on multiple computers, you may experience some problem in receiving customer support or running your copy of MathMagic in the future.

© 1998-2004 InfoLogic, Inc. All rights reserved.

[Math+Magic], MathMagic, MathMagic Pro Edition, MathMagic Personal Edition, MathMagic XTensions, and InfoLogic are trademarks or registered trademarks of InfoLogic, Inc.

All other trademarks may be the properties of their respective owners.

© 2002-2003 Worldwide sales and distribution rights by nPine, Inc.

www.mathmagic.com